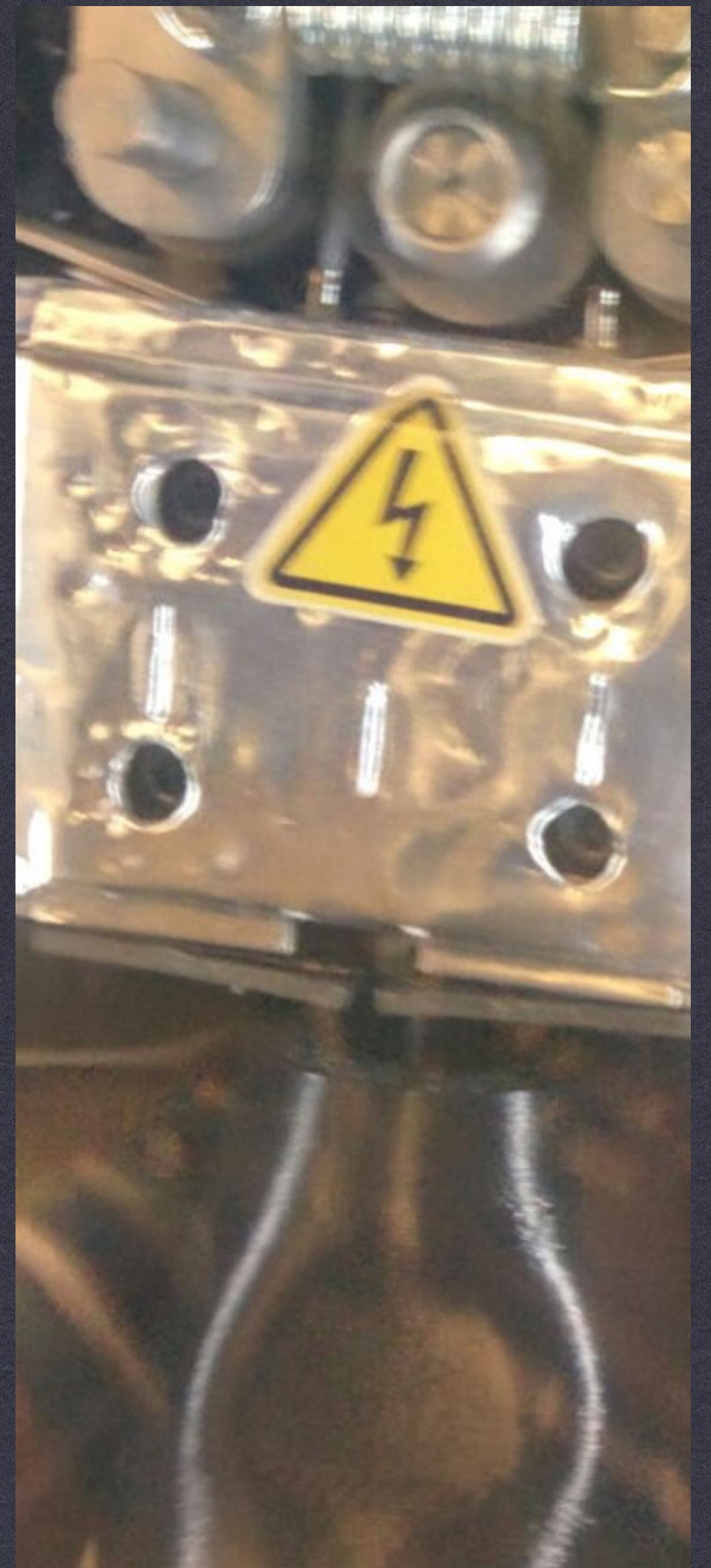


ELASTIC MINDS

FORMULA E 2016 DOCUMENTATION

AUG 16 2016



WEEK 13

COMMUNITY PARTNERSHIP, FINAL BUILD



COMMUNITY PARTNERSHIP WITH ARTWORKS : AFTER PRESENTATION ON DESIGN AS CAREERS POSSIBILITY WE ENGAGED STUDENTS IN PAINTING CAR BODIES FOR EXHIBITION IN FINAL RACE



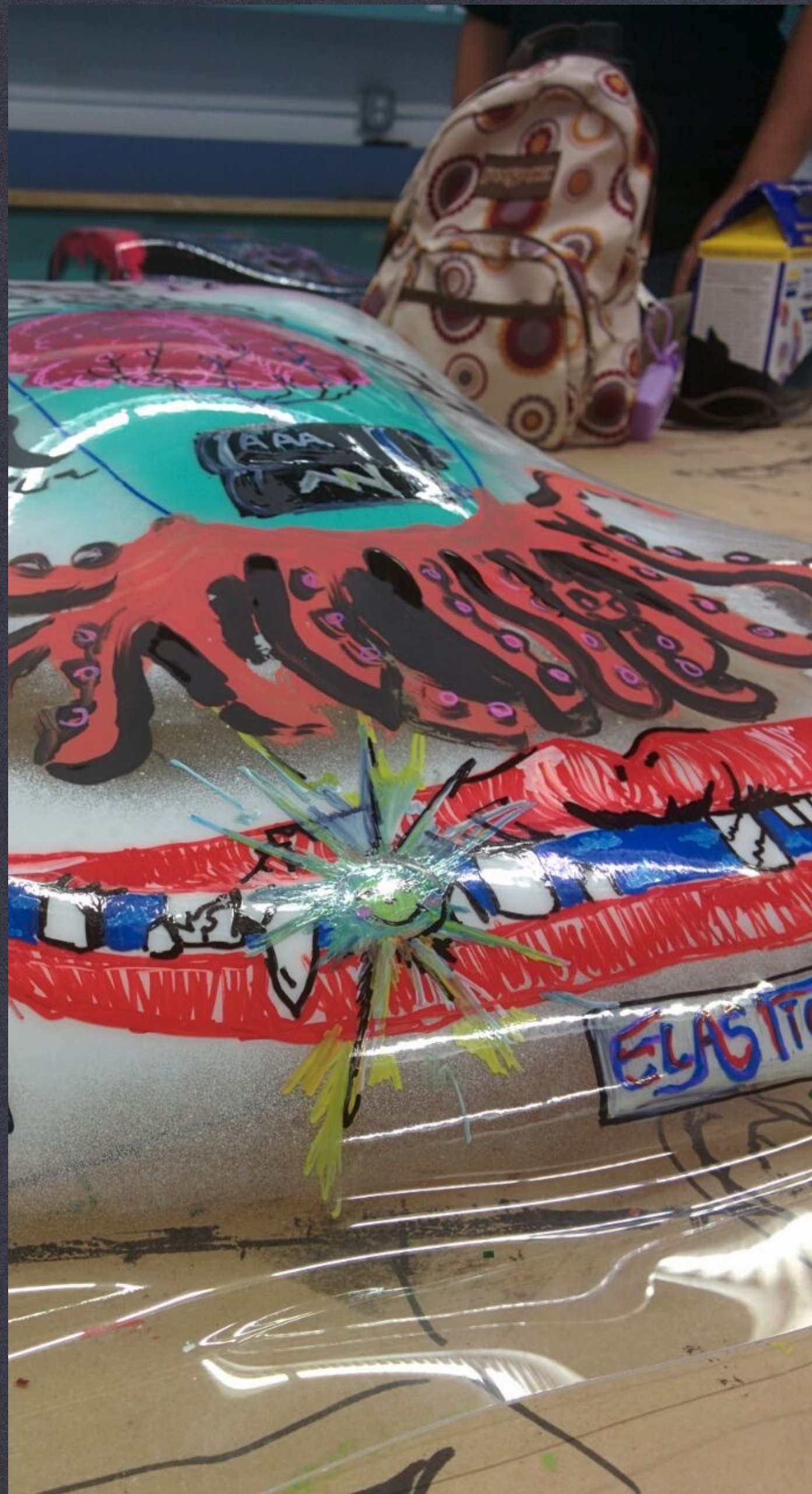
ARTWORKS + ELASTIC MINDS

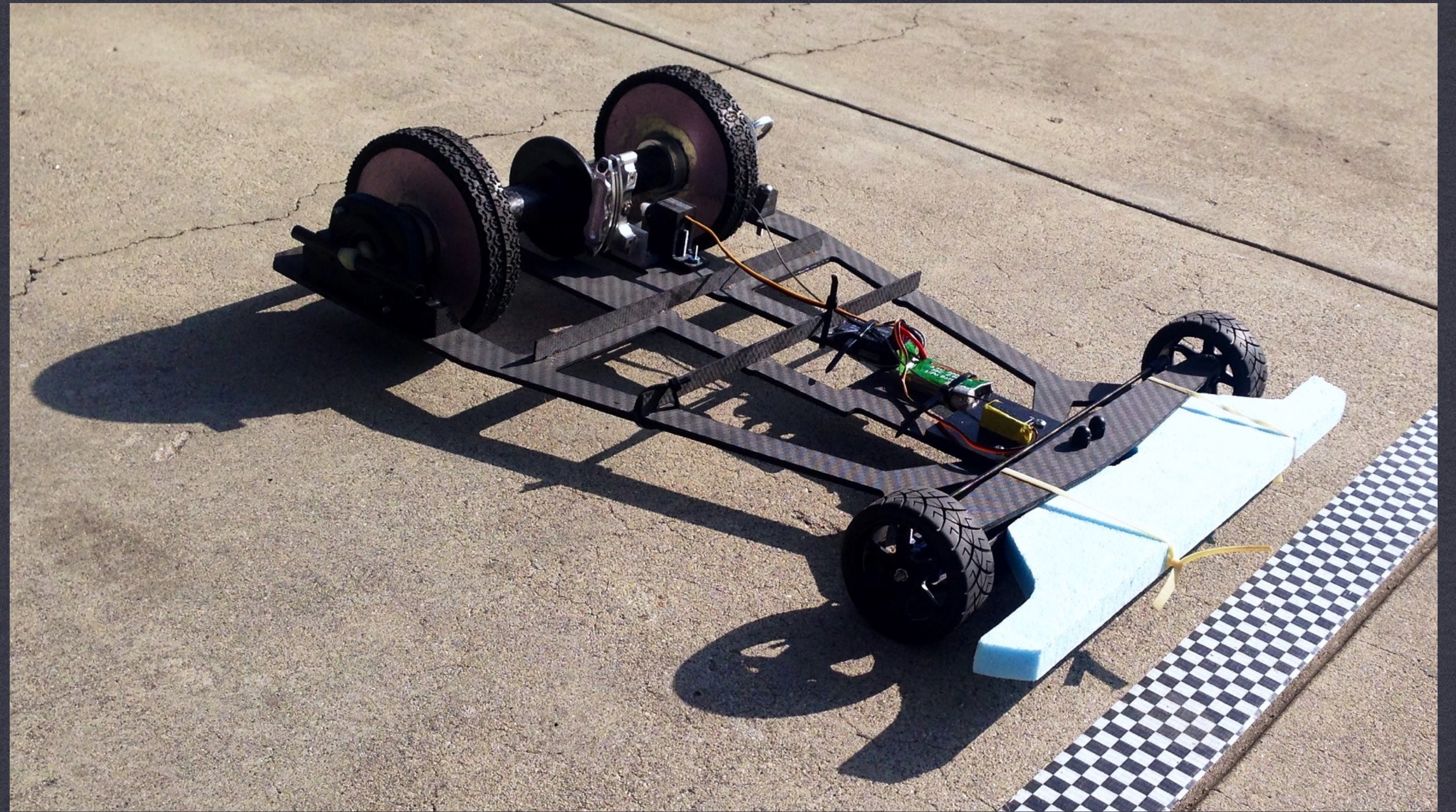
TEACHERS: SERGIO HERNANDEZ
JOE SANCHEZ

ASSISTANT: BRANDON RAMIREZ

STUDENTS: MARK ADAN
ISABEL FERNANDEZ
HEATHER MERCIECA
JOSE PADILLA







ELASTIC MINDS